



# CANOLFAN CELFYDDYDAU PONTARDAWE PONTARDAWE ARTS CENTRE

CHILDS  
SULZMANN  
ARCHITECTS



COMISIWN ARTIST  
ARTIST COMMISSION



MAIN ENTRANCE ACROSS PUBLIC SQUARE



LIVELY MARKET ON PUBLIC SQUARE

## 01\\ RHAGARWEINIAD

Mae Canolfan Celfyddydau Pontardawe yn ganolfan gelfyddydau a diwylliannol amlbwrpas yng nghanol Cymru. Cynhelir gwaith proffesiynol o'r safon uchaf yn y theatr hardd draddodiadol hon, o gerddoriaeth werin, y byd a'r blŵs i gerddoriaeth glasurol, digrifwyr ar eu traed i sgysiau gan enwogion, dawns i ddrama, llenyddiaeth i ddigwyddiadau i blant.

Yn dilyn cystadleuaeth agoriadol, mae Childs Sulzmann Architects wedi datblygu cynllun i ailwampio'r tu mewn i'r adeilad yn helaeth ac adeiladu estyniad newydd i ddarparu lle sinema dynodedig.

Mae Childs Sulzmann Architects wedi bod yn datblygu cynlluniau gydag Awdurdod Castell-nedd Port Talbot ac maent wedi cyflwyno ffurflen cyn ymgeisio. Fel rhan o'r broses cyn ymgeisio, tynnwyd sylw arbennig at y driniaeth i ffasâd allanol yr estyniad i'r sinema a sut mae hyn yn ymwneud â chyddestun y safle ehangach.

Hoffai'r cleient, Awdurdod Castell-nedd Port Talbot, benodi artist i helpu i ddatblygu ffasadau'r sinema ar y cyd â Childs Sulzmann Architects.

Penodir yr artist yn uniongyrchol gan Awdurdod Castell-nedd Port Talbot ond bydd yn gweithio'n agos â Childs Sulzmann Architects i ddatblygu'r syniadau i'w cynnwys yn y cais cynllunio.

Bydd yr artist yn rhan hollbwysig o'r tîm dylunio, gan helpu i greu ffasâd diddorol sy'n weledol drawiadol a fydd yn helpu i integreiddio'r adeilad yn y cyd-destun lleol, yn bensaernïol ac yn ddiwylliannol.

## 01\\ INTRODUCTION

Pontardawe Arts Centre is an important multi-purpose art and cultural centre in the heart of Wales. The beautiful traditional theatre hosts professional work of the highest calibre, from folk, world and blues to classical music, stand up comedy to celebrity talks, dance to drama, literature to children's events.

Following an open competition Childs Sulzmann Architects have developed a scheme to carry out an extensive refurbishment to the interior of the building and to construct a new extension to provide a dedicated cinema space.

Childs Sulzmann Architects have been developing plans with the Neath and Port Talbot Authority and have submitted a pre-application. As part of the pre-application response particular attention was drawn to the treatment of the external facade of the cinema extension and how this relates to the wider site context.

The client, Neath and Port Talbot Authority would like to appoint an artist to help develop the cinema facades in conjunction with Childs Sulzmann Architects.

The artist will be appointed directly by Neath and Port Talbot Authority but will work closely with Childs Sulzmann Architects to develop the ideas for inclusion in the planning application.

The artist will form a key part of the design team, helping to create a visually striking and engaging facade that will help integrate the building within the local context, both architecturally and culturally.



MAIN THEATRE SPACE



VIEW TOWARDS PROPOSED LOCATION OF CINEMA

## 02 \\ BRIFF

Mae Childs Sulzmann Architects wedi datblygu nifer o opsiynau sy'n archwilio lleoliadau a chynlluniau amrywiol ar gyfer yr estyniad arfaethedig i'r sinema. Mae'r Ganolfan Celfyddydau mewn lleoliad amlwg yng nghanol Pontardawe a bydd yr estyniad yn wynebu'r stryd fawr a'r sgwâr cyhoeddus o flaen prif fynedfa'r adeilad yn uniongyrchol.

Ychydig iawn o gyfle sydd i greu tu blaen gweithredol drwy wydro oherwydd natur dyluniad y sinema. O ganlyniad, bydd angen bod yn ofalus iawn wrth fynd ati i greu ffasâd sy'n gweddu'n gyfforddus i'r cyd-destun strydoedd lleol wrth ymgysylltu'n ystyrlon â'r cyhoedd ehangach.

### Briff i Artistiaid:

- Deall y cyd-destun diwylliannol a hanesyddol lleol.
- Darparu mewnbwn i'r dyluniad i greu ffasâd sy'n ennyn diddordeb ac sy'n adlewyrchu'r cyd-destun diwylliannol a hanesyddol hwn wrth sicrhau ei fod yn gweddu i gyd-destun y strydoedd cyfagos.
- Rhoi mewnbwn ynghylch y detholiad o ddeunyddiau a'r modd y caiff y deunyddiau eu trin i integreiddio'r celfwaith arfaethedig i'r ffasâd mewn ffordd sy'n adlewyrchu'r deunyddiau adeiladau lleol nodweddiadol.
- Helpu i greu dyluniad cyfoes sy'n adlewyrchu uchelgeisiau'r ganolfan gelfyddydau wrth barchu ei hanes.

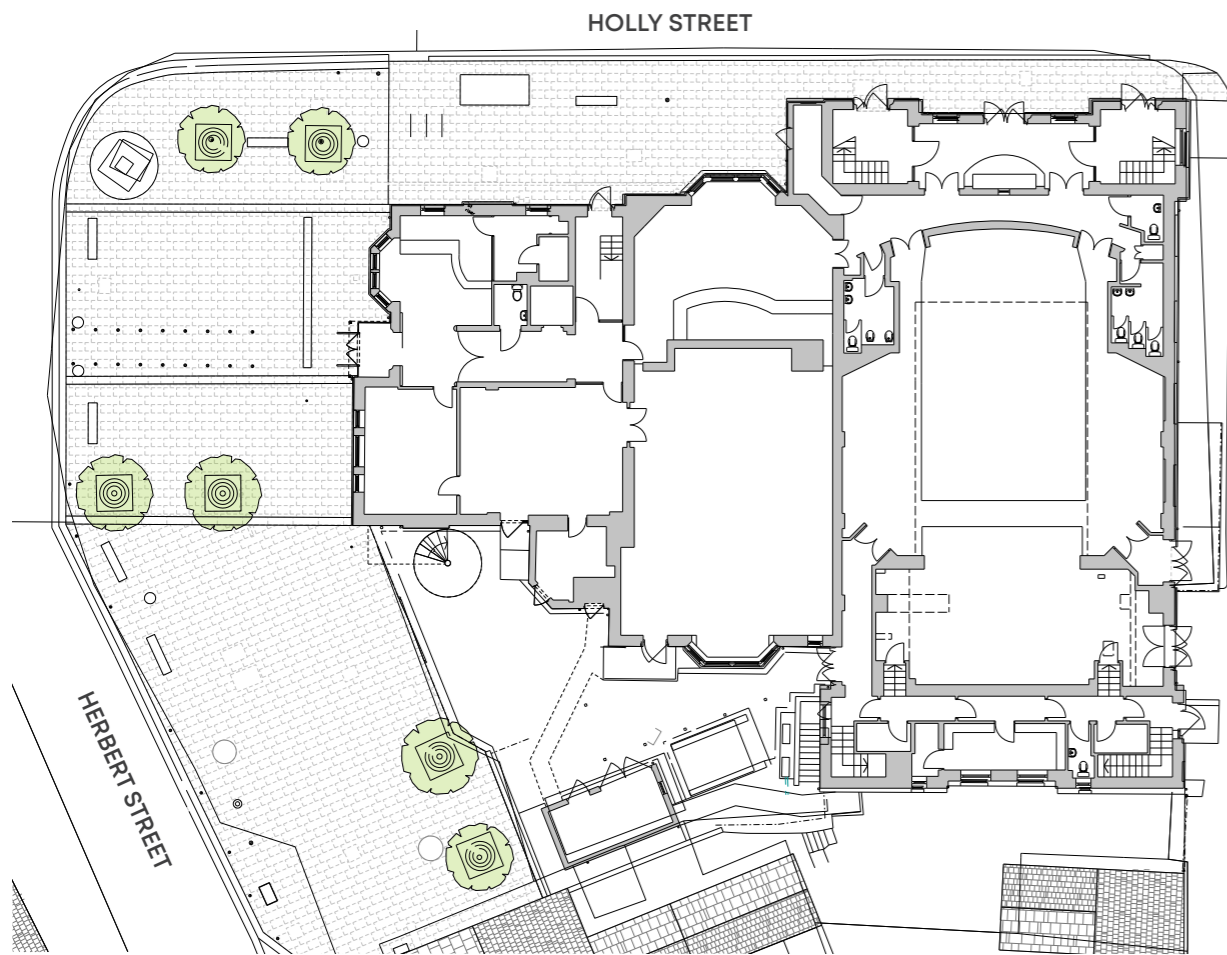
## 02 \\ BRIEF

Childs Sulzmann Architects have developed a number of options exploring various locations and layouts for the proposed cinema extension. The Arts Centre is located in a very prominent location within the centre of Pontardawe and the extension will face directly on to both the high street and the public square in front of the main building entrance.

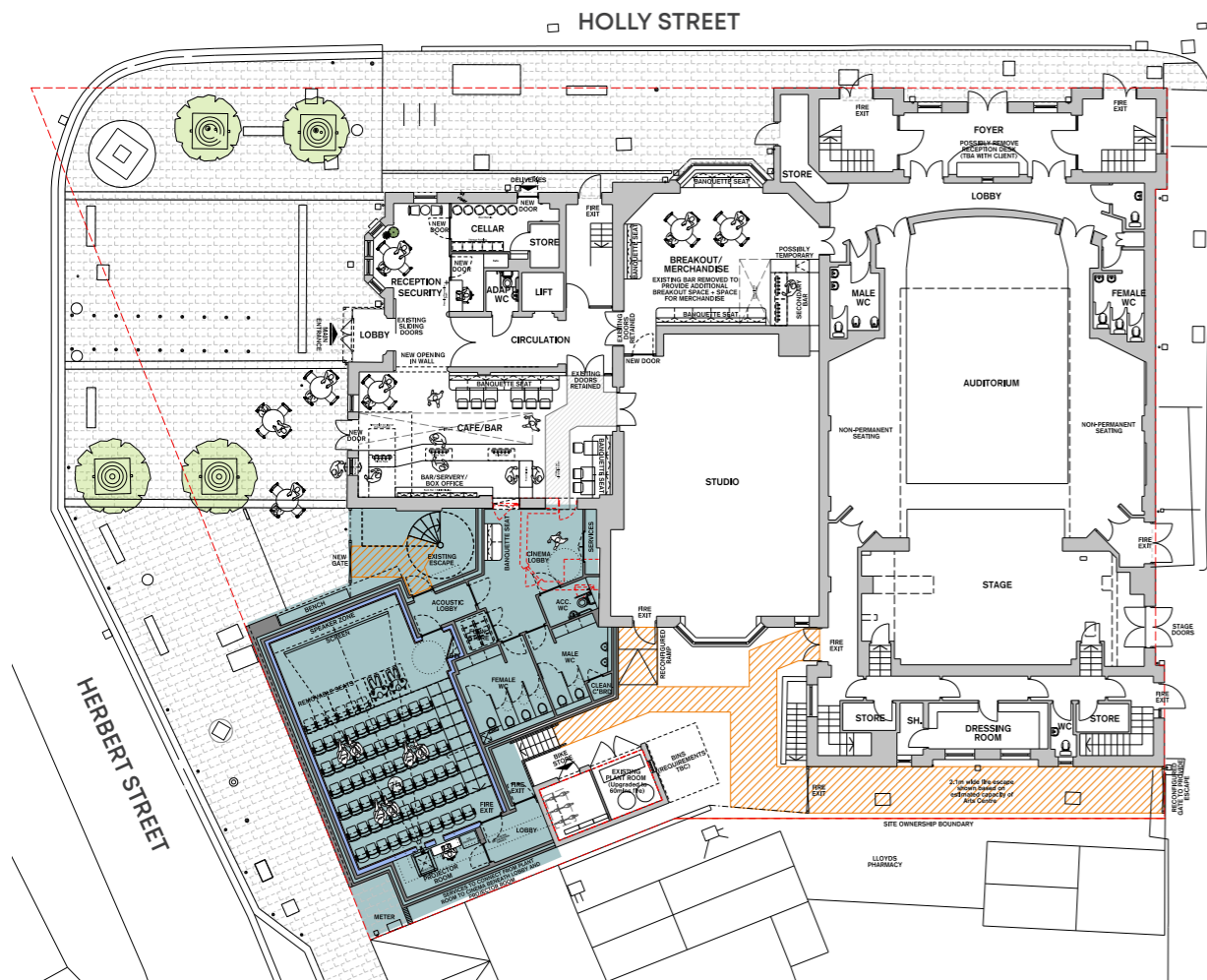
The nature of cinema design is such that there is little scope for creating active frontage through glazing. As a result particular care is needed to create a facade that sits comfortably within the local street context whilst engaging meaningfully with the wider public.

### Artist Brief:

- Understand the local cultural and historic context.
- Provide input into the design to create an engaging facade that reflects this cultural and historic context whilst appearing sympathetic to the surrounding street context.
- Input into the selection of materials and material treatments to integrate the proposed artwork into the facade in a way that reflects the typical local building materials.
- Help create a contemporary design that reflects the ambitions of the arts centre whilst respecting its history.



EXISTING SITE PLAN



PROPOSED SITE PLAN

# 03 \\ GWYBODAETH AM Y SAFLE

## CANOLFAN CELFYDDYDAU

Herbert Street  
Pontardawe,  
Abertawe  
SA8 4ED

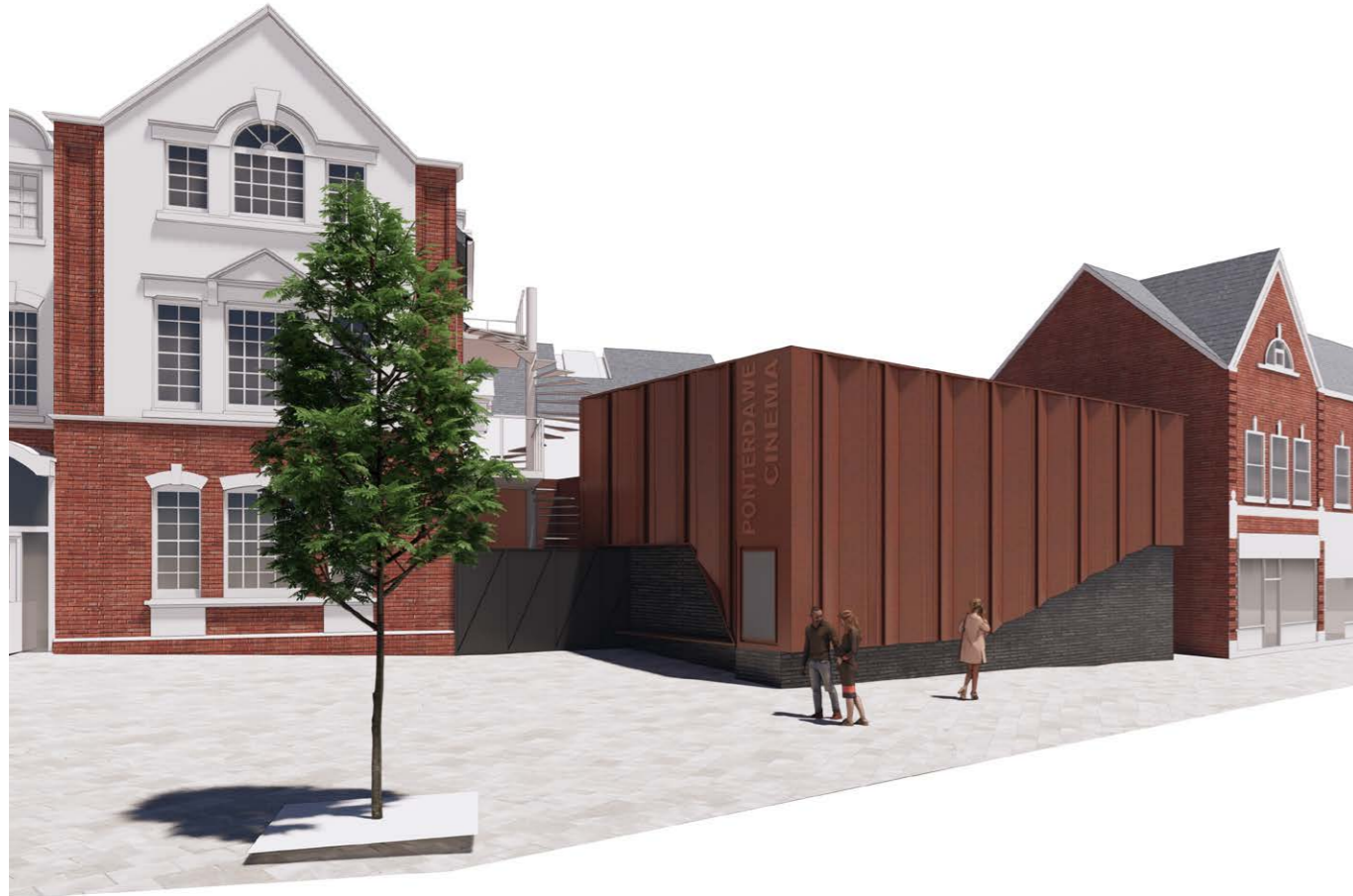
# 03 \\ SITE INFORMATION

## PONTARDAWE ARTS CENTRE

Herbert St,  
Pontardawe,  
Swansea  
SA8 4ED



PROPOSED SOUTH WEST ELEVATION



PROPOSED SOUTH WEST AND NORTH WESTS ELEVATIONS

## 04 \\ CYNIGION DYLUNIO CYFFREDINOL

Bwriedir i'r delweddau canlynol ddangos maint a ffurf yr estyniad yn ei gyd-destun. Paratowyd y dyluniad ar gyfer trafodaethau cychwynnol â'r awdurdod lleol ond nid yw'n osodedig nac yn derfynol. Gwahoddir yr artist i gyfrannu at y ddau brif ffasâd sy'n weladwy o'r sgwâr cyhoeddus a strydoedd cyfagos Holly Street a Herbert Street.

## 04 \\ INITIAL DESIGN PROPOSALS

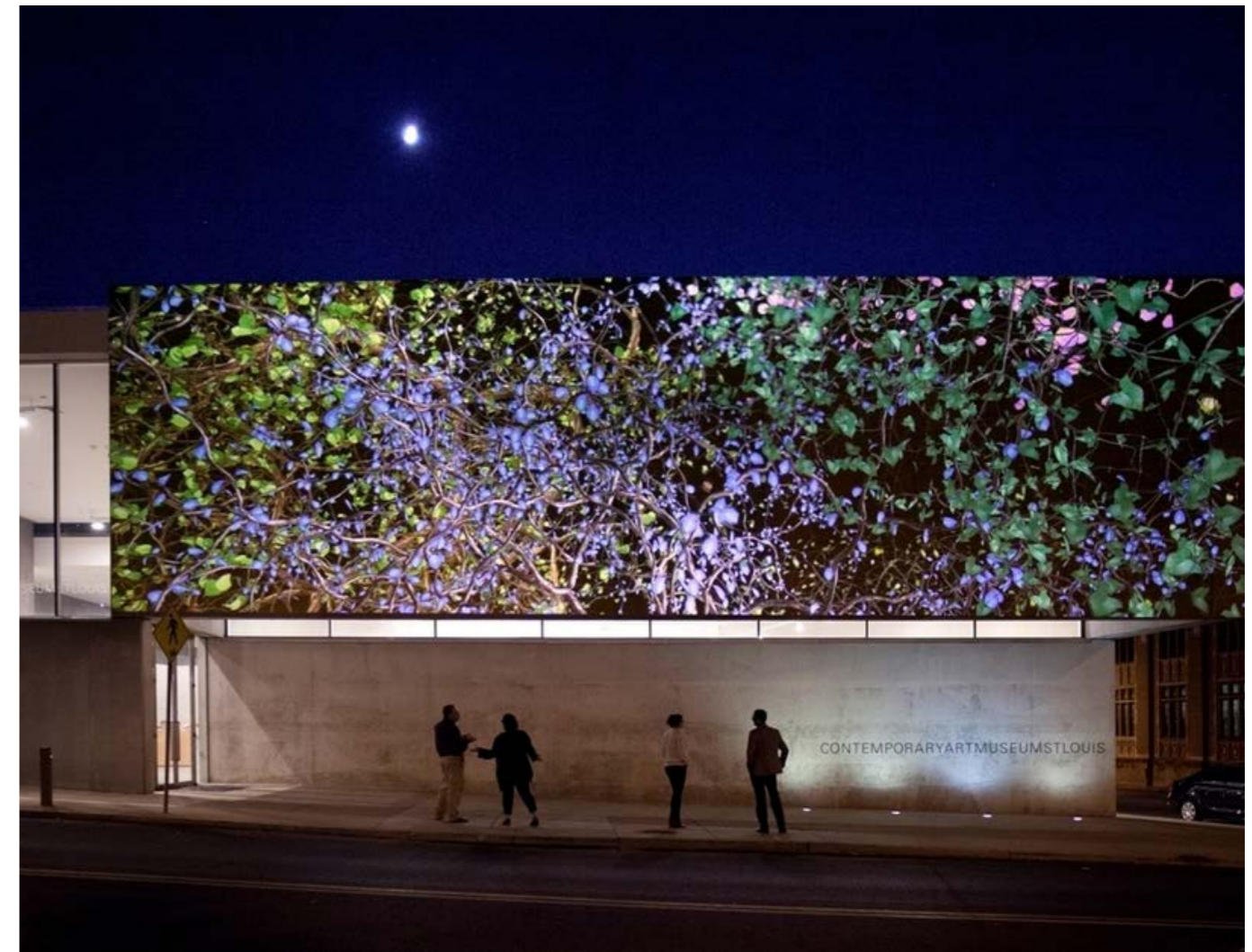
The following images are intended to demonstrate the scale and form of the extension in context. The design has been prepared for initial discussions with the local authority but is not fixed or final. The artist is invited to input on the two main facades visible from the public square and neighbouring Holly Street and Herbert Street.

## 05 \\ SYNIADAU DYLUNIO CYFFREDINOL

Dewiswyd y delweddau canlynol i helpu i ddechrau'r sgwrs ac i ddangos rhai o'r syniadau cychwynnol a drafodwyd â'r cleient a'r awdurdod lleol. Ni fwriedir iddynt fod yn rhagnodol ac ni fwriedir iddynt ychwaith lywio darpar artistiaid i gyfeiriad penodol.

## 05 \\ GENERAL DESIGN IDEAS

The following images are have been selected to help start the conversation and to demonstrate some of the initial ideas discussed with the client and local authority. These are not intended to be prescriptive nor are they intended to steer prospective artists in any particular direction.





## 06 \\ FFI

Cynigir uchafswm ffi sefydlog o £4,000 i'r artist i ymgymryd â'r gwaith.

## 06 \\ FEE

The artist is offered a fixed maximum fee of £4,000 to undertake the works.

## 07 \\ MYNEGIAINT O DDIDDORDEB

Gwahoddir artistiaid i gyflwyno mynegiant o ddiddordeb I wneud hynny, anfonwch CV gyda llythyr nad yw'n fwy na 2 dudalen o hyd.

### 1\\ Chi a'ch gwaith

- Eich enw a'ch manylion cyswllt
- Enghreifftiau o waith a phrofiad blaenorol perthnasol
- Dywedwch wrthym pam y mae'r comisiwn hwn yn apelio atoch
- Anfonwch ddelweddau neu ddolenni fideo o waith perthnasol

### 2\\ Eich syniadau cychwynnol

- Beth rydych chi'n ei gynnig?
- Esboniad byr o'r cysyniad a'r broses yr hoffech er mwyn datblygu'r syniad
- Sut bydd eich syniad chi o fudd i'r safle a'r gymuned yn eich tyb chi?

Dylid anfon ceisiadau at:  
Paul Dorrell  
[p.dorrell@npt.gov.uk](mailto:p.dorrell@npt.gov.uk)

### 3\\ Amserlen

Dyddiad cau ar gyfer cyflwyno'r cais:	11 Chwefror 2022
Cyfweliad:	18 Chwefror 2022
Gweithdy cyntaf gyda chwmni Childs Sulzmann Architects	I'w gadarnhau
Cynnig manwl terfynol	I'w gadarnhau

## 07 \\ EXPRESSION OF INTEREST

Artists are invited to submit an expression of interest. To do so please send a CV with a letter no more than 2 pages.

### 1\\ You and your work

- Your name and contact details
- Examples of previous relevant work and experience
- Tell us what it is about this commission that appeals to you
- Please send images or video links of relevant work

### 2\\ Your initial ideas

- What are you proposing?
- A brief explanation of the concept and the process you would like develop the idea
- How do you see your idea being of benefit to the site and community?

Applications should be sent to:  
Paul Dorell  
[p.dorrell@npt.gov.uk](mailto:p.dorrell@npt.gov.uk)

### 3\\ Timeline

Application Deadline:	11 Feb 2022
Interview:	18 Feb 2022
First Workshop with Childs Sulzmann Architects	TBC
Final detailed proposal	TBC